

EMERGENCY EVACUATION PLAN – BALLROOM

Purpose

The purpose of the Emergency Evacuation Plan is to enable our guests with restricted mobility or those who may not be able to evacuate unaided to become familiar with the layout and evacuation procedures.

The Ballroom Evacuation Action

In the unlikely event we have to evacuate the Ballroom an announcement will be made via loud hailer by security. Please make your way to the Disabled Refuge areas detailed on the plan overleaf. The Security team will assist you to exit the building safely via the fire escape at the rear of the Ballroom or the front if you are situated in the Ballroom Foyer. You will then be assisted to the Assembly point in Reeves Mews.

If able, you should leave the building immediately by the nearest fire exit (see attached floor plan) and report to the assigned assembly point in Reeves Mews

Public Areas

There are multiple emergency exits in each of our public areas. Please identify the exit that is closest to you whilst enjoying these facilities. Wheelchair lifts are available in both JW Steakhouse and in the Park Room allowing for exit from the building. A member of staff is required to operate these lifts.

Assembly Point In Case of Emergencies

Once outside the building the assembly point in an emergency is in Reeves Mews directly opposite the main entrance of the hotel on Park Street. Members of staff in fluorescent vests will be available in various locations once you reach the exterior of the building. Always stay as far away as possible from the building in case of an emergency.

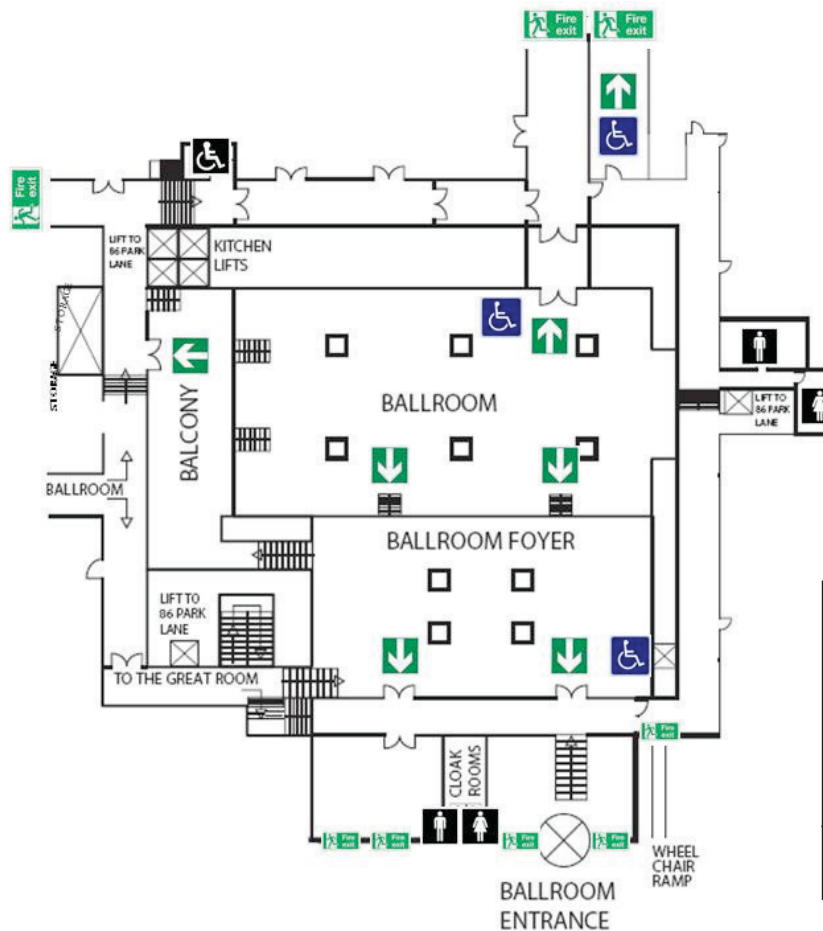
Other Recommendations



It is recommended that all visitors and guests to the Grosvenor House, A JW Marriott should familiarise themselves with the fire alarm signals and floor layout of the building.

Please contact the Security Department should you require any further information on 0207 399 8566 or on extension 4824

In case of an emergency dial 666

EMERGENCY EVACUATION PLAN – BALLROOM



BALLROOM EVACUATION PLAN	
	FIRE EXITS
	FIRE EXIT ROUTES
	DISABLED EVACUATION